



NATA LIGHTING CO.,LTD.
www.nata.cn
Email:info@nata.com
Tel:+86-750-3770000 Fax:+86-750-3771111
Address:380JinOu Road,GaoXin Zone,Jiang Men City,Guangdong,China

Nata

LumCAT: 1497-A	
Luminaire: 92.70.043.00	
Report No: 200403-B011	Voltage(V): 35.1000
Test No: 200403-C011	Current(A): 0.2000
LampCAT: LUMINUS CXM-6-AC40	Power (W): 7.0200
Lamp flux(lm): 881.0	PF: 0.0000
Number of Lamps: 1	Ballast type: DC
Length(mm): 0	Width(mm): 0
Phm Type: C	Height(mm): 0

Photometric Results

Lumens(lm): 782.12
Efficiency(%): 88.78%
Lumens(lm)/Power(W): 111.41
Central intensity(cd): 1135.955
Maximum intensity(cd): 1135.955
Angle of maximum intensity: C=0.0 γ =0.0
Beam Angle(50%Imax): [C0/180]Total=45.9
 [C90/270]Total=45.9
Field angle(10%Imax): [C0/180]Total=80.1
 [C90/270]Total=80.1
Maximum s/h(1/2): C0_180=0.72 C90_270=0.72
Maximum s/h(1/4): C0_180=0.76 C90_270=0.76
Up flux rate of lamp(%): 0.00%
Down flux rate of lamp(%): 88.78%
Up flux rate of LUM(%): - -
Down flux rate of LUM(%): 100.00%
CIE Type : Direct lighting
Output flux ratio in π solid angle : 97.893%

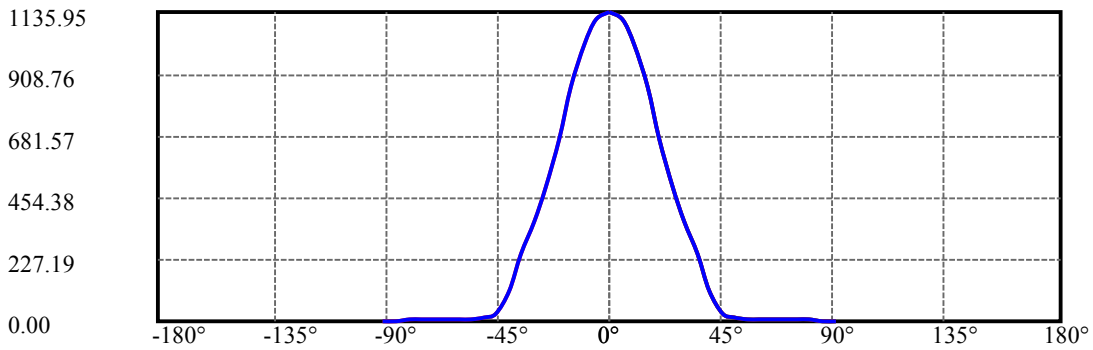
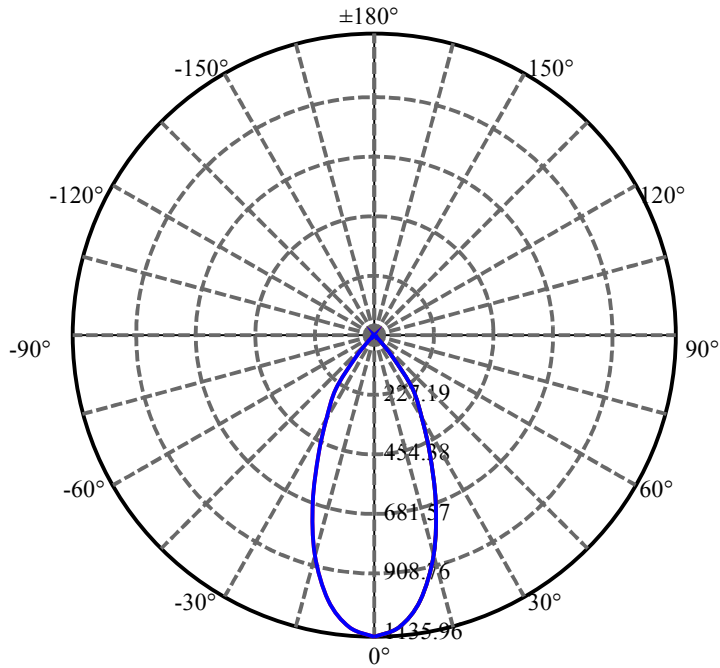
$\gamma(^{\circ})$	Average I(cd)	Zonal F(lm)	Sum F(lm)	Eff Flux(%)	Eff Sum(%)
0.0	1135.955	0.000	0	.000%	.000%
5.0	1105.854	26.800	26.8	3.042%	3.427%
10.0	1015.284	75.880	102.68	8.613%	13.128%
15.0	857.370	111.085	213.765	12.609%	27.332%
20.0	671.358	125.989	339.753	14.301%	43.440%
25.0	494.740	122.302	462.055	13.882%	59.078%
30.0	368.838	109.287	571.342	12.405%	73.051%
35.0	250.010	91.130	662.472	10.344%	84.702%
40.0	114.462	60.809	723.281	6.902%	92.477%
45.0	26.585	26.116	749.397	2.964%	95.816%
50.0	13.331	8.066	757.463	.916%	96.848%
55.0	8.058	4.651	762.113	.528%	97.442%
60.0	7.200	3.527	765.64	.400%	97.893%
65.0	6.954	3.441	769.081	.391%	98.333%
70.0	6.813	3.486	772.567	.396%	98.779%
75.0	5.400	3.192	775.759	.362%	99.187%
80.0	4.015	2.519	778.278	.286%	99.509%
85.0	3.502	2.042	780.321	.232%	99.770%
90.0	3.059	1.796	782.117	.204%	100.000%

ZONAL LUMEN SUMMARY

Zone	Lumens	%Lamp	%Fixt
0-30	571.34	64.85%	73.05%
0-40	723.28	82.10%	92.48%
0-60	765.64	86.91%	97.89%
0-90	780.32	88.57%	99.77%
0-120	780.32	88.57%	99.77%
0-180	782.12	88.78%	100.00%
60-90	18.21	2.07%	2.33%
90-120	0.00	0.00%	0.00%
90-130	0.00	0.00%	0.00%
90-150	0.00	0.00%	0.00%
90-180	0.00	0.00%	0.00%
0-32.98	625.69	71.02%	80.00%

ZONAL LUMEN SUMMARY

0-10	102.68
10-20	237.07
20-30	231.59
30-40	151.94
40-50	34.18
50-60	8.18
60-70	6.93
70-80	5.71
80-90	2.04
90-100	0.00
100-110	0.00
110-120	0.00
120-130	0.00
130-140	0.00
140-150	0.00
150-160	0.00
160-170	0.00
170-180	0.00



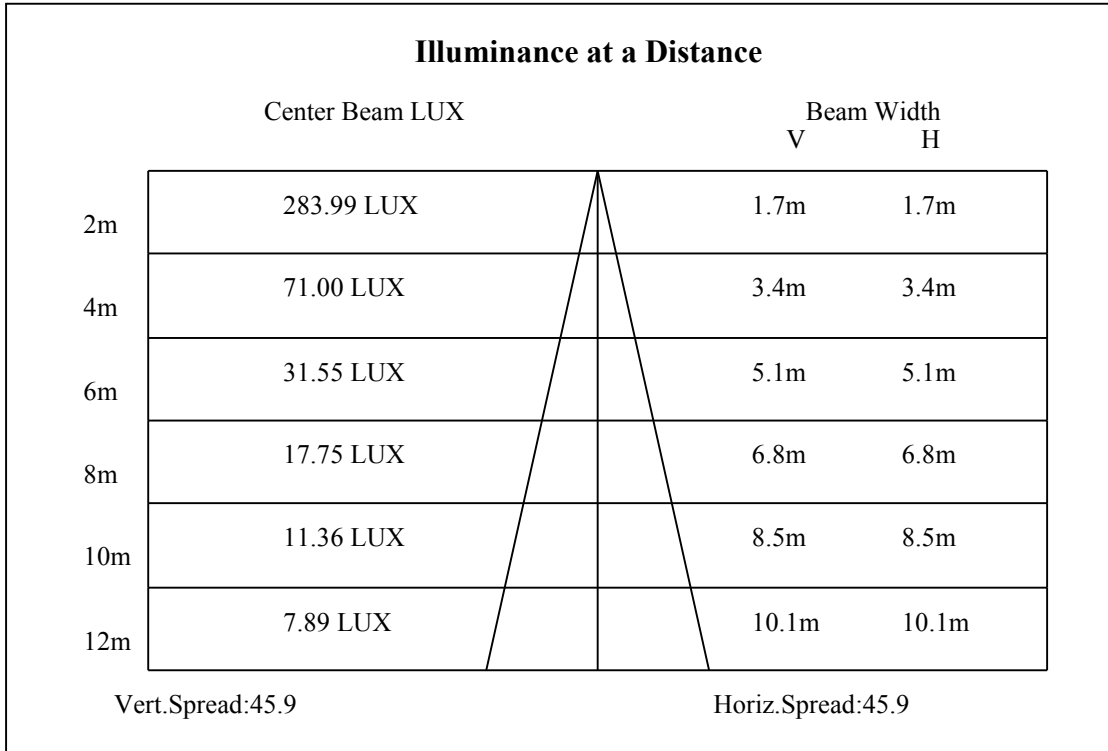
C0(Max): —————

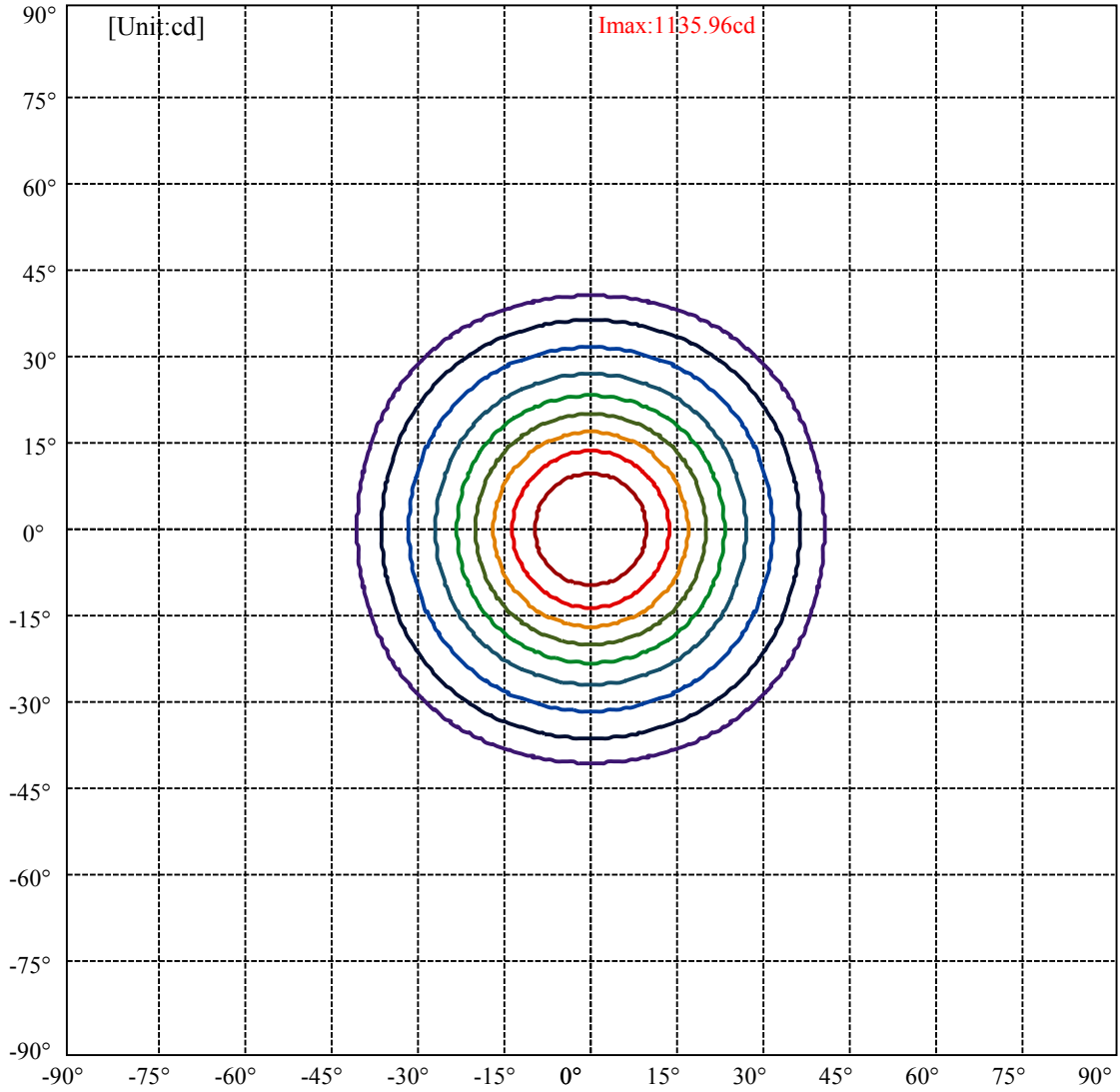
C0/C180: —————

C90/C270: —————

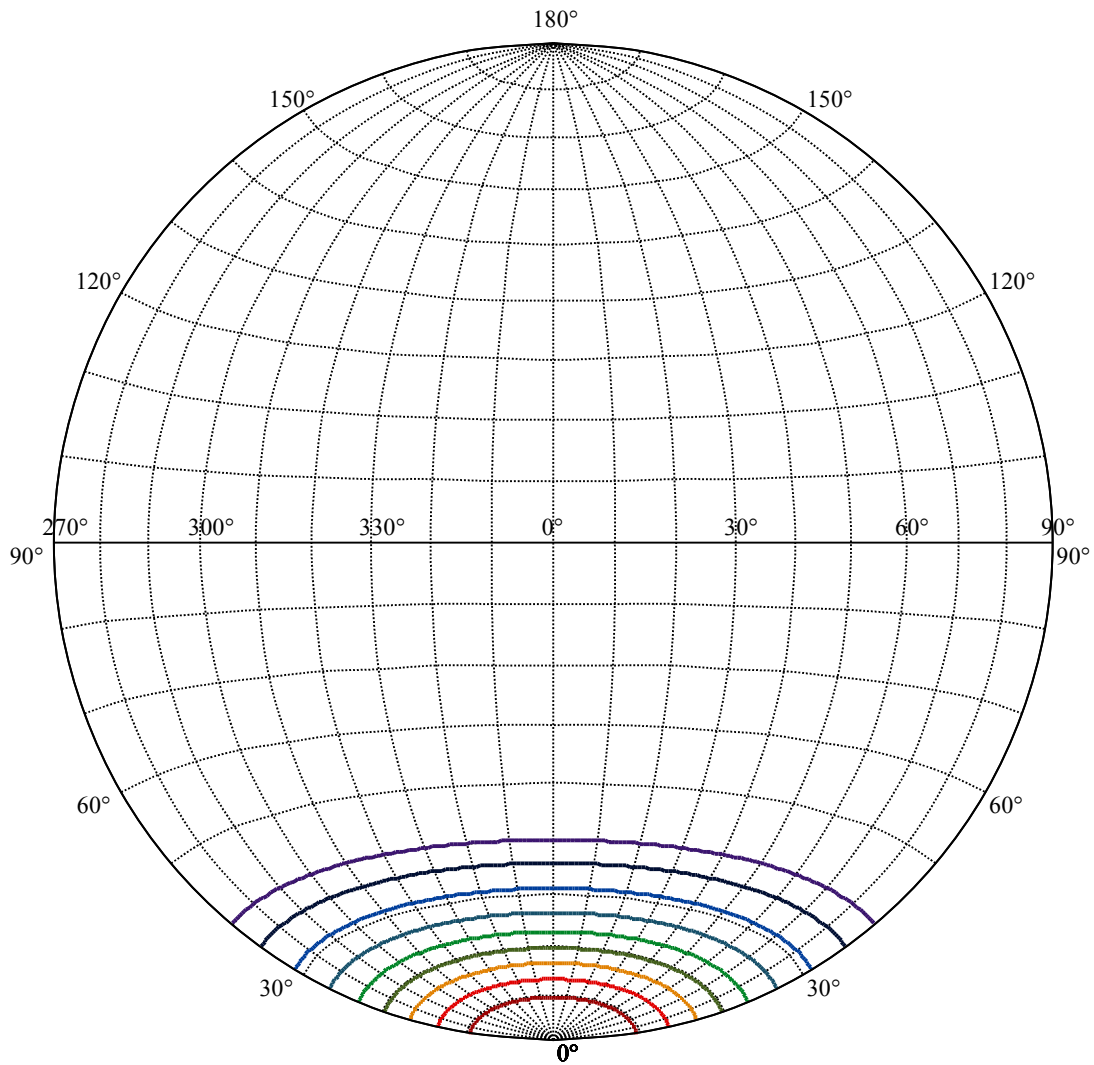
Field angle(10%Imax):C0/180Left:40.0 Right:40.0
:C90/270Left:40.0 Right:40.0

Beam Angle(50%Imax):C0/180Left:22.9 Right:22.9
:C90/270Left:22.9 Right:22.9





(10%Imax) 113.595	—
(20%Imax) 227.191	—
(30%Imax) 340.786	—
(40%Imax) 454.382	—
(50%Imax) 567.977	—
(60%Imax) 681.573	—
(70%Imax) 795.168	—
(80%Imax) 908.764	—
(90%Imax) 1022.36	—



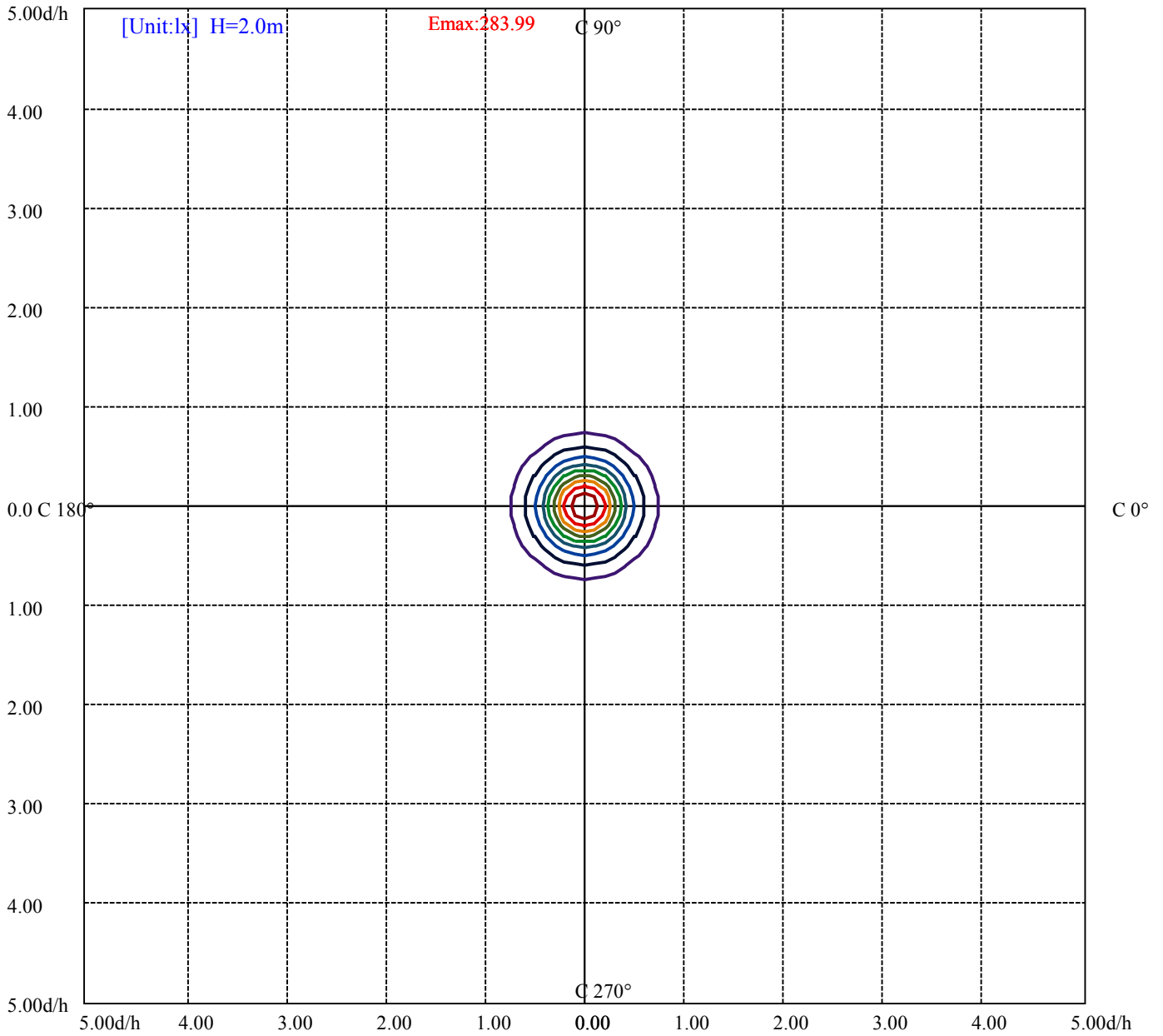
House

[Unit:cd]

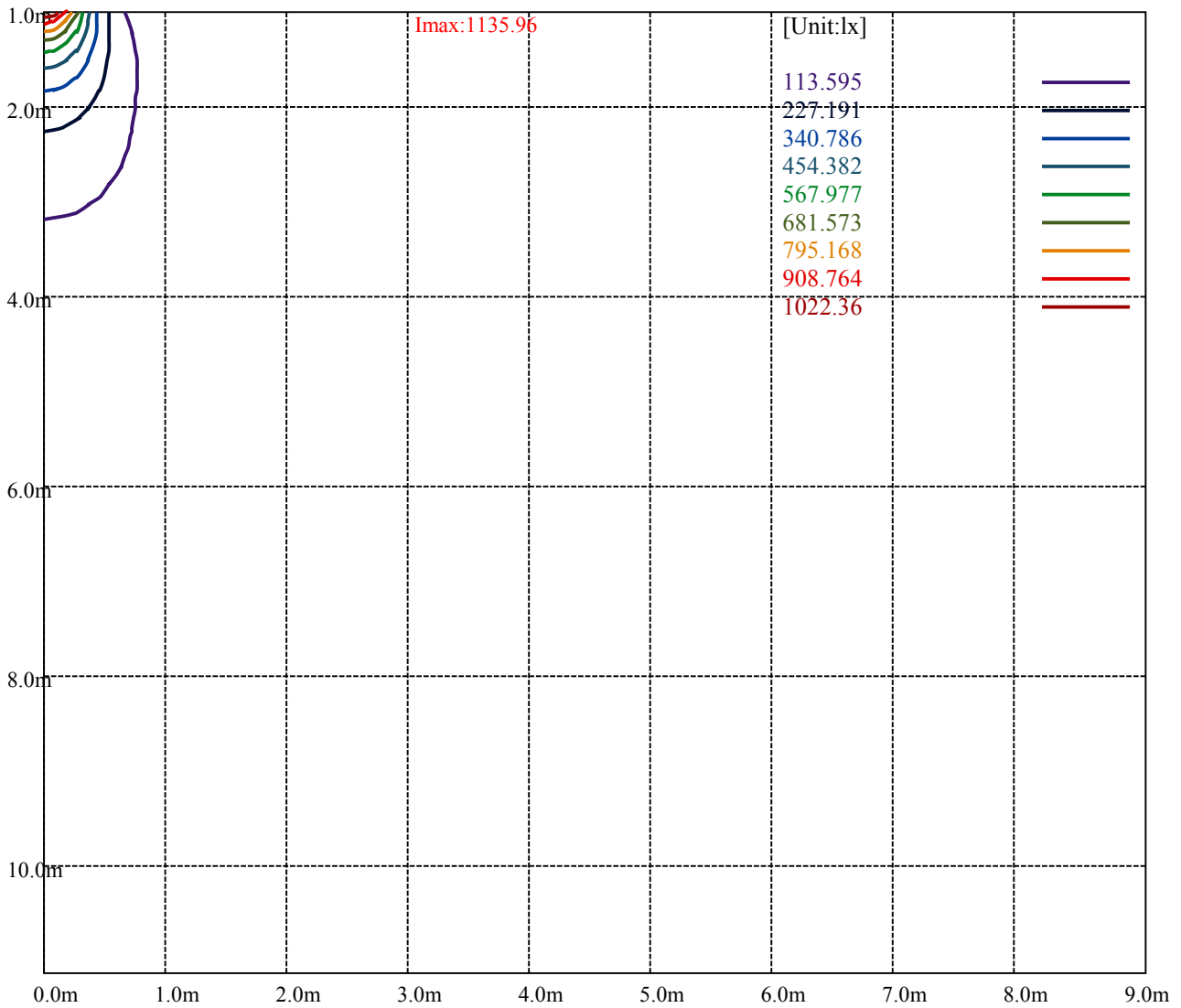
Road

I_{max}:1135.96

(10%I _{max}) 113.595	—
(20%I _{max}) 227.191	—
(30%I _{max}) 340.786	—
(40%I _{max}) 454.382	—
(50%I _{max}) 567.977	—
(60%I _{max}) 681.573	—
(70%I _{max}) 795.168	—
(80%I _{max}) 908.764	—
(90%I _{max}) 1022.36	—



- (10%Emax) 28.39875
- (20%Emax) 56.79775
- (30%Emax) 85.1965
- (40%Emax) 113.5955
- (50%Emax) 141.9942
- (60%Emax) 170.393
- (70%Emax) 198.792
- (80%Emax) 227.1908
- (90%Emax) 255.59



Luminance Table

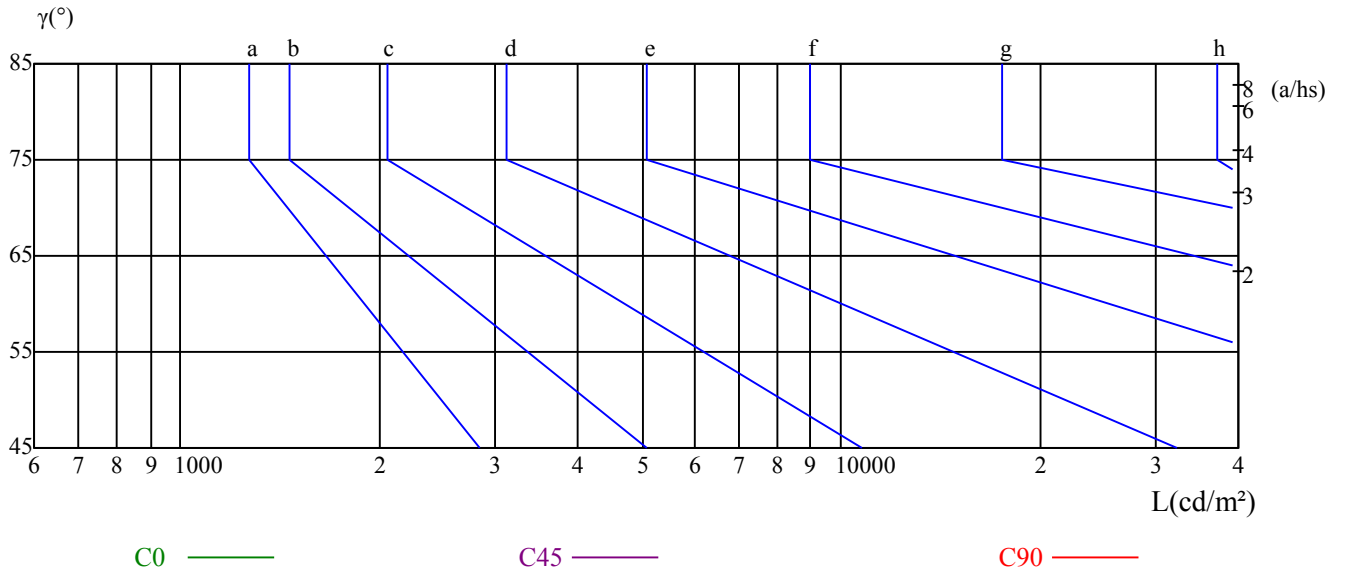
γ	45	50	55	60	65	70	75	80	85
C0	0	0	0	0	0	0	0	0	0
C45	0	0	0	0	0	0	0	0	0
C90	0	0	0	0	0	0	0	0	0

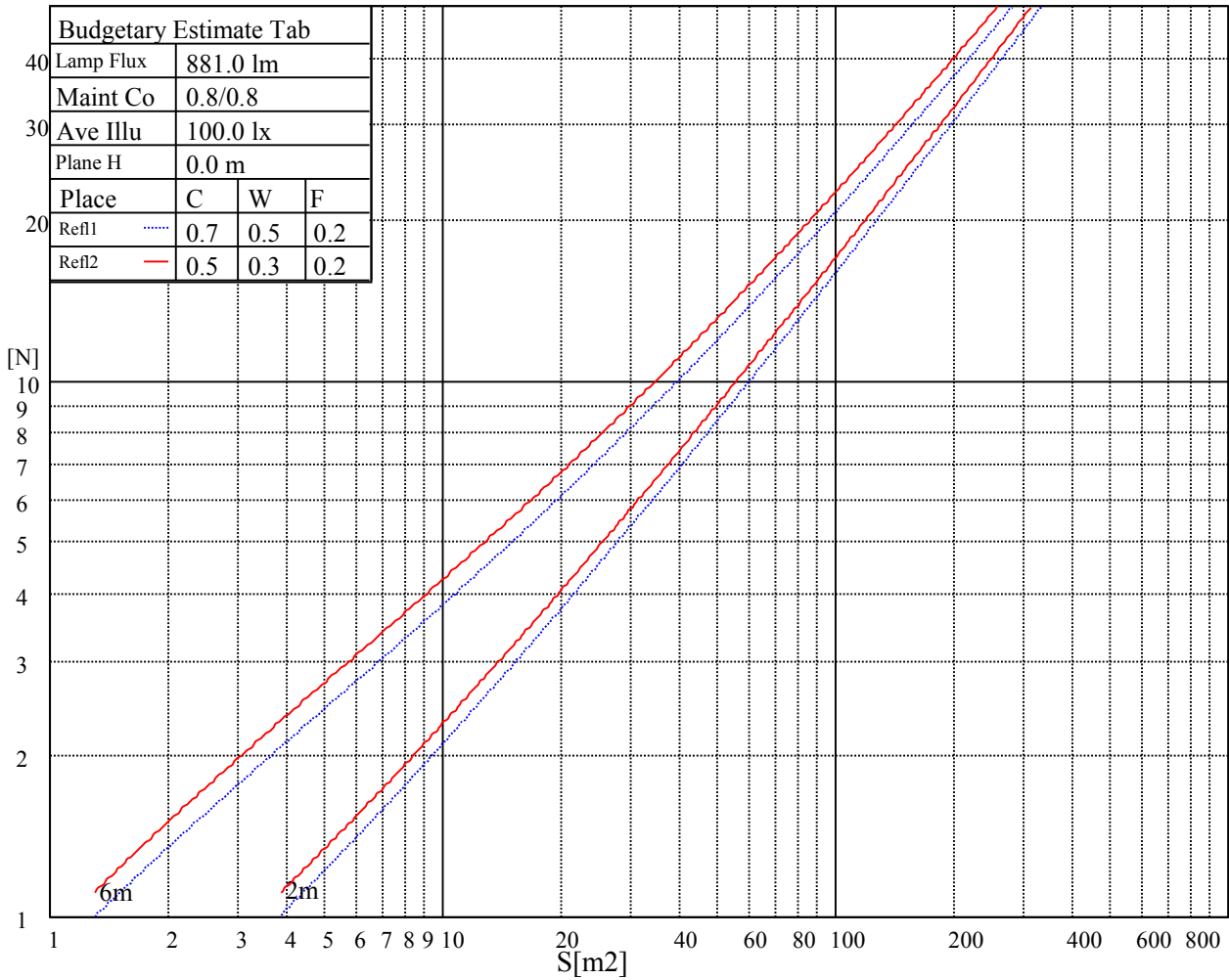
L(Hor)(65)	L(Ver)(65)	L45(65)	L(Hor)(75)	L(Ver)(75)	L45(75)	L(Hor)(85)	L(Ver)(85)	L45(85)
0	0	0	0	0	0	0	0	0

Glare Table

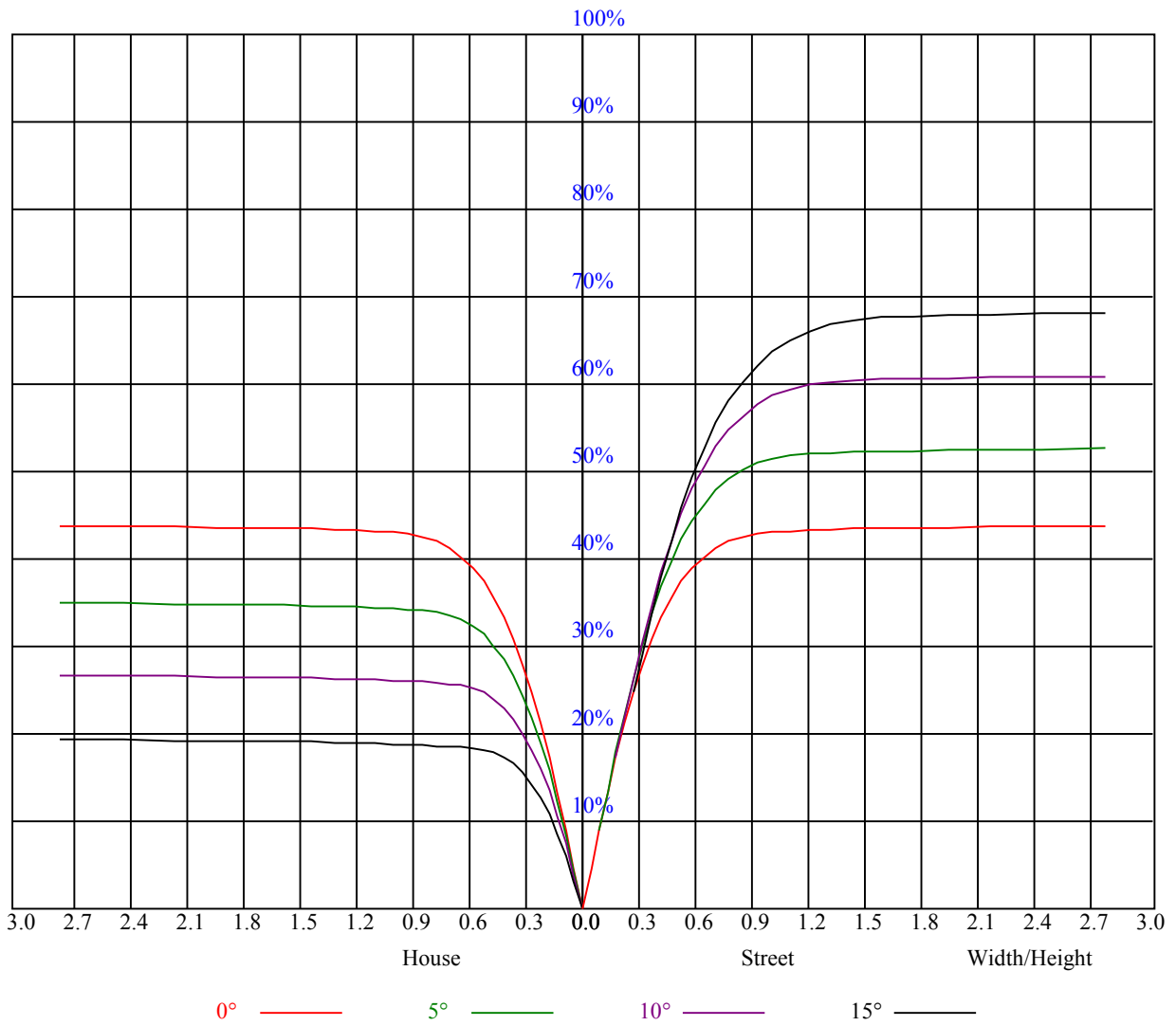
Glare	Quality	Service Values Illuminance(lx)							
1.15	A	2000	1000	500	<=300				
1.5	B		2000	1000	500	<=300			
1.85	C			2000	1000	500	<=300		
2.2	D				2000	1000	500	<=300	
2.55	E					2000	1000	500	<=300
		a	b	c	d	e	f	g	h

Luminance Limiting Curve





RHOCC	80			70			50			30			10			0
RHOW	50	30	10	50	30	10	50	30	10	50	30	10	50	30	10	0
RCR	COEFFICIENTS OF UTILIZATION RHOFC=20 CU															
0	1.06	1.06	1.06	1.03	1.03	1.03	0.99	0.99	0.99	0.94	0.94	0.94	0.91	0.91	0.91	0.89
1	0.98	0.96	0.94	0.96	0.94	0.92	0.93	0.91	0.89	0.89	0.88	0.87	0.86	0.85	0.84	0.83
2	0.91	0.88	0.85	0.90	0.87	0.84	0.87	0.84	0.82	0.84	0.82	0.80	0.82	0.80	0.79	0.77
3	0.85	0.81	0.77	0.84	0.80	0.77	0.82	0.78	0.76	0.80	0.77	0.74	0.78	0.75	0.73	0.72
4	0.80	0.75	0.71	0.79	0.75	0.71	0.77	0.73	0.70	0.75	0.72	0.69	0.74	0.71	0.69	0.67
5	0.75	0.70	0.66	0.74	0.70	0.66	0.73	0.69	0.65	0.71	0.68	0.65	0.70	0.67	0.64	0.63
6	0.71	0.66	0.62	0.70	0.65	0.62	0.69	0.64	0.61	0.68	0.64	0.61	0.66	0.63	0.60	0.59
7	0.67	0.62	0.58	0.66	0.61	0.58	0.65	0.61	0.58	0.64	0.60	0.57	0.63	0.60	0.57	0.56
8	0.63	0.58	0.55	0.63	0.58	0.54	0.62	0.57	0.54	0.61	0.57	0.54	0.60	0.56	0.54	0.53
9	0.60	0.55	0.51	0.60	0.55	0.51	0.59	0.54	0.51	0.58	0.54	0.51	0.57	0.53	0.51	0.50
10	0.57	0.52	0.49	0.57	0.52	0.49	0.56	0.51	0.48	0.55	0.51	0.48	0.55	0.51	0.48	0.47



Intensity data(cd)

C/ γ (°)	0.0	5.0	10.0	15.0	20.0	25.0	30.0	35.0	40.0
0.0	1136.81	1109.25	1014.75	865.13	678.94	517.50	401.63	286.88	139.05
45.0	1137.38	1108.69	1017.56	875.81	689.63	499.50	385.31	286.88	131.63
90.0	1147.50	1103.23	1012.16	837.68	644.01	475.88	341.21	204.24	98.27
135.0	1122.13	1123.31	1058.63	912.38	708.19	515.81	385.31	286.88	127.52
180.0	1136.81	1111.16	1019.64	852.81	657.73	481.39	354.49	216.06	97.71
225.0	1137.38	1102.05	1010.19	838.97	662.51	489.04	349.48	223.82	98.33
270.0	1147.50	1108.69	1010.25	862.88	689.63	511.88	397.13	285.19	120.99
315.0	1122.13	1080.45	979.09	813.32	640.24	466.93	336.15	210.15	102.21
360.0	1136.81	1109.25	1014.75	865.13	678.94	517.50	401.63	286.88	139.05
C/ γ (°)	45.0	50.0	55.0	60.0	65.0	70.0	75.0	80.0	85.0
0.0	32.68	15.81	7.37	5.57	4.78	4.33	4.22	3.99	3.60
45.0	27.17	14.23	6.53	5.23	4.56	4.22	3.99	3.88	3.60
90.0	22.16	10.69	7.88	6.92	6.36	5.68	4.61	3.66	3.43
135.0	24.98	12.21	9.11	8.83	8.83	8.83	7.03	3.83	3.32
180.0	21.15	9.90	7.03	6.98	7.43	7.31	4.39	3.43	3.32
225.0	25.20	11.93	8.89	8.38	8.44	8.61	5.96	3.94	3.60
270.0	32.06	18.68	10.52	9.90	9.62	9.90	8.10	5.34	3.49
315.0	27.28	13.22	7.14	5.79	5.63	5.63	4.89	4.05	3.66
360.0	32.68	15.81	7.37	5.57	4.78	4.33	4.22	3.99	3.60
C/ γ (°)	90.0								
0.0	3.15								
45.0	3.21								
90.0	3.04								
135.0	2.98								
180.0	2.93								
225.0	3.09								
270.0	3.04								
315.0	3.04								
360.0	3.15								